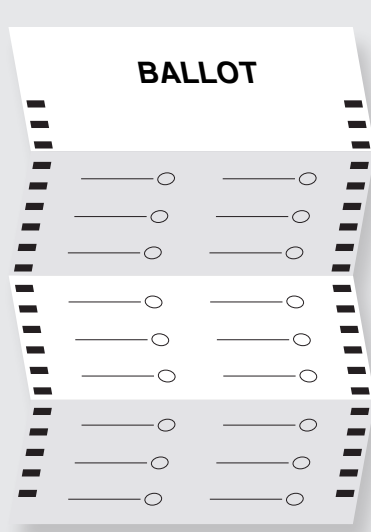


# VOTING IN THE PRIMARY ELECTIONS: A GUIDE FOR INDEPENDENTS

In Arizona, Independent voters can participate in open primary elections! Just follow these steps.

## STEP 1: PICK A BALLOT



Independents must first choose which party's ballot they want to vote.\* If voting Democratic or Republican, you won't need to reregister.

### TIP

Check your voter registration status online! Visit [azclean-elections.gov/am-i-registered-to-vote](https://azclean-elections.gov/am-i-registered-to-vote) and make any updates by at least 27 days before an election.

## STEP 2: DECIDE WHEN TO VOTE

### VOTE EARLY



#### BY MAIL

Independents who vote early by mail must contact their county recorder 11 days before an election to choose a ballot. Mail back your completed ballot 7 days before the election, or drop it off at a voting location in your county by 7pm on Election Night.



#### IN PERSON

Contact the County Recorder's Office for early voting locations and hours. The last day to vote early in person is the Friday before Election Day.

### TIP

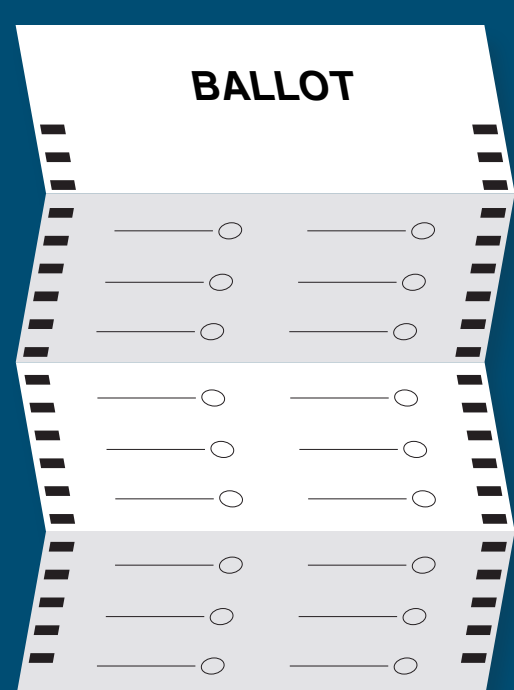
Learn how to contact your County Recorder's Office at [azcleanelections.gov/vote-early](https://azcleanelections.gov/vote-early)



### VOTE ON ELECTION DAY

Ask your poll worker for the party ballot of your choice on Election Day. Polls are open from 6 a.m. to 7 p.m. Be sure to bring your ID!

## WHICH BALLOT DO I GET?



Democratic Party	→	Democratic Party Ballot
Green Party	→	Green Party Ballot
Libertarian Party	→	Libertarian Party Ballot
Republican Party	→	Republican Party Ballot
No Labels Party	→	No Labels Party Ballot*
Independent Voter (No Party Affiliation)	→	Choose One: Democratic, Republican, or local non-partisan (if available)

\*The No Labels (NOL) Party Ballot will NOT have any federal, state, or legislative office candidates listed on it. This is due to a preliminary injunction issued by the U.S. District Court for Arizona barring NOL candidates from appearing on the Arizona Primary Election ballot. *No Labels Party of Arizona v. Adrian Fontes, CV-23-02172-PHX-JJT (2024)*. No Label Party voters who are on the Active Early Voting List will automatically be sent a No Labels Party Ballot with no candidates listed, unless they contact their County Recorder to determine if a local non-partisan ballot is available or they change their political affiliation on their voter registration before the deadline.