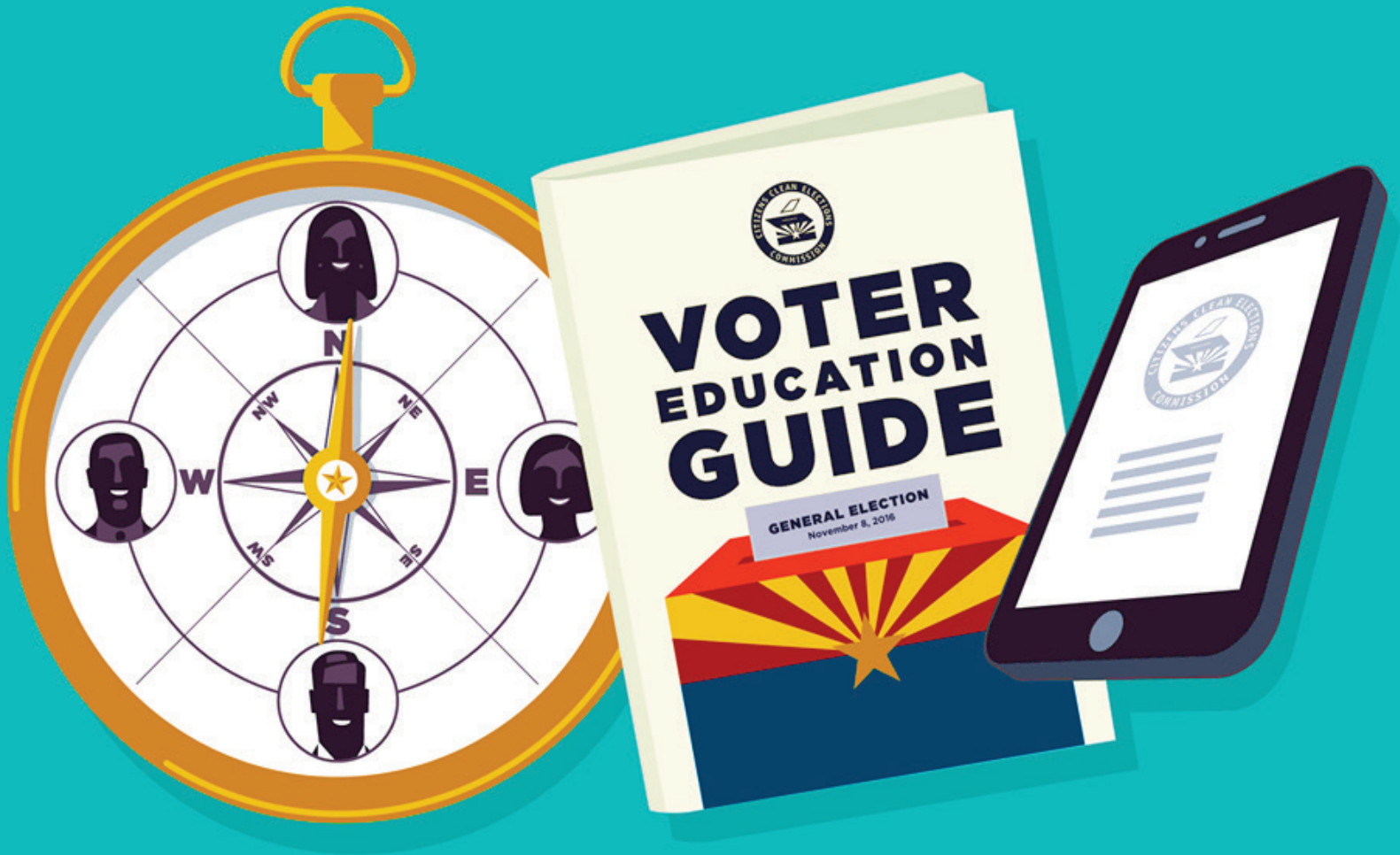


# 2016 ANNUAL REPORT



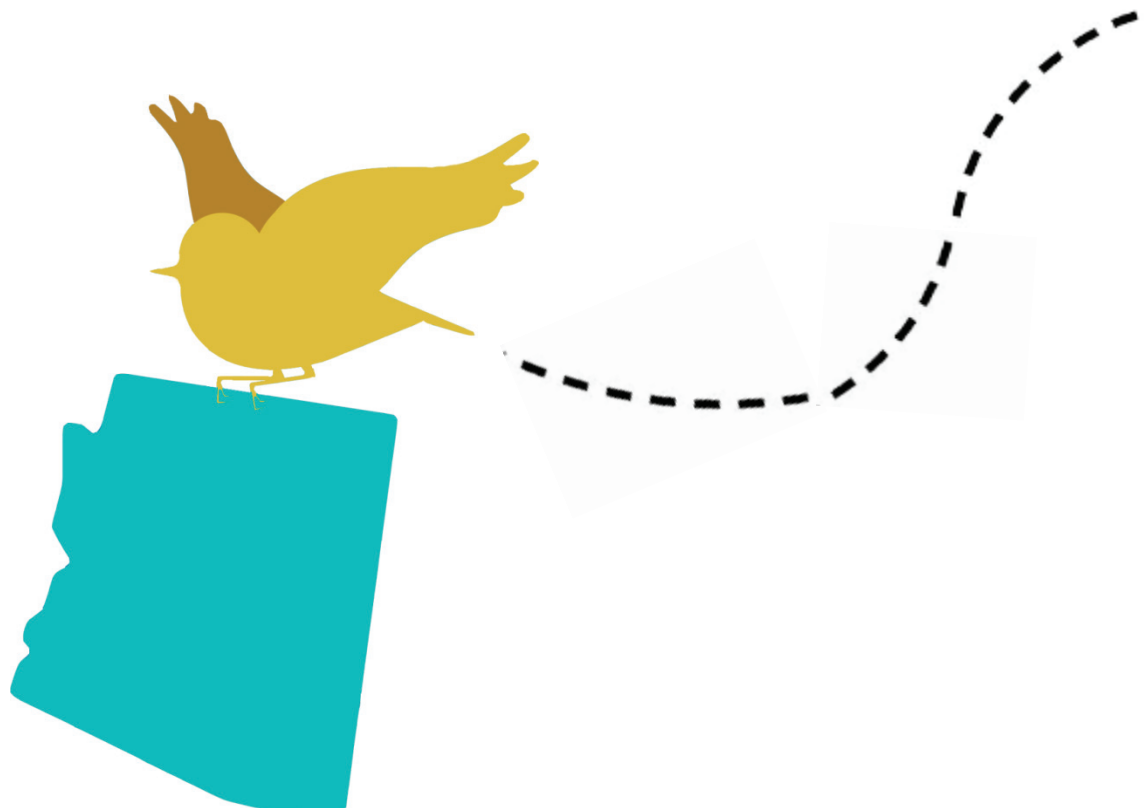
# 2016 ANNUAL REPORT

**Presented By The Citizens Clean Elections Commission**

The Annual Report will be submitted to the Governor, the President of the Arizona State Senate and the Speaker of the Arizona State House of Representatives. This report will be made available online at [www.azcleanelections.gov](http://www.azcleanelections.gov).

# TABLE OF CONTENTS

Letter from the Chairman	i
Voter & Public Education	1
Financial Information	11
Enforcement, Candidate Audits & Litigation	12
2016 Candidate Summary	13
2016 Primary Election Candidate Listing	14
2016 General Election Candidate Listing	27
Rulemaking & Legislation	39
Looking Forward to 2017	41
Commissioners & Staff	42





**Douglas A. Ducey**  
Governor

**Thomas M. Collins**  
Executive Director



**Steve M. Titla**  
Chair

**Damien R. Meyer**  
**Mark S. Kimble**  
**Galen D. Paton**  
**Amy B. Chan**  
Commissioners

**State of Arizona**  
**Citizens Clean Elections Commission**

1616 W. Adams - Suite 110 - Phoenix, Arizona 85007 - Tel (602) 364-3477 - Fax (602) 364-3487 - [www.azcleanelections.gov](http://www.azcleanelections.gov)

---

February 23, 2017

The Honorable Doug Ducey  
Governor of the State of Arizona  
1700 West Washington  
Phoenix, AZ 85007

Dear Governor Ducey:

The Citizens Clean Elections Commission is pleased to submit for your information the 2016 Annual Report, pursuant to Arizona Revised Statutes §16-956(A)(5). The Annual Report describes the activities performed by the Commission in the last calendar year.

In 1998, the voters of Arizona passed the Citizens Clean Elections Act. Over 18 years later, the Commission continues its commitment of upholding the letter and spirit of the Act. The Commission accomplished its goals set forth and looks forward to the same success in 2017.

Respectfully,

Steve M. Titla, Chairman  
Citizens Clean Elections Commission



# Voter & Public Education

The Commission continued to provide information to the public regarding Clean Elections participation and the functions and purposes of the Clean Elections Act. This was accomplished through education campaigns throughout the four statewide elections in 2016, grassroots and social media outreach. The Commission consistently provides election information on how, where and when to vote.

The Commission's education and outreach efforts for 2016 included:

- "Vote Informed" Campaign
- "Candidate Compass" Launch
- Smart Device Application
- Candidate Training
- Candidate Debates
- Candidate Statement Pamphlets
- Grassroots Outreach
- Research
- Website & Social Media

## **Educating the Voters. Educating the Candidates.**

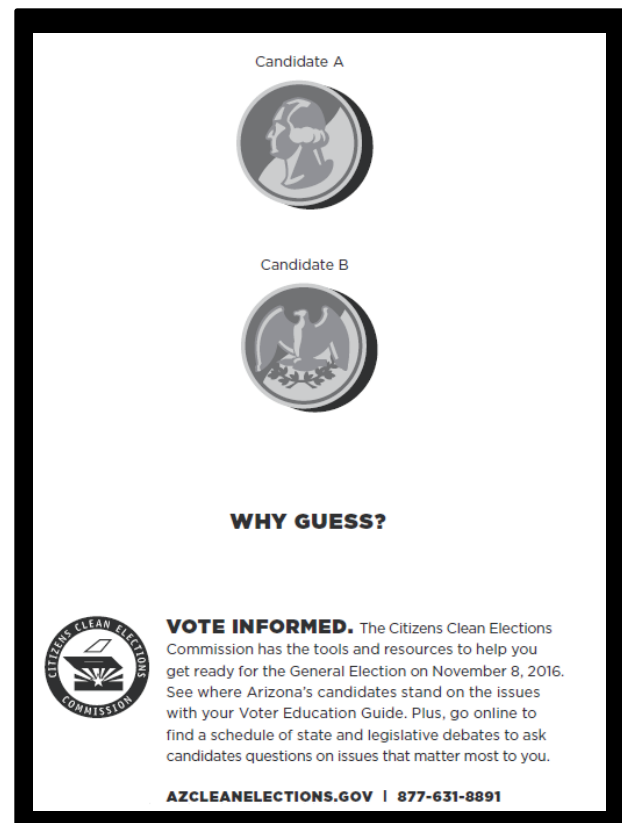
In addition to educating the voters, the Commission strives to educate candidates running for office.

The Commission hosts candidate training workshops that include details about campaign finance reporting and debate participation.

The Commission spends 10% of the expenditure cap on voter education in accordance with its statutory requirements. See page 11 of this report for more financial information.

# “Vote Informed” Campaign

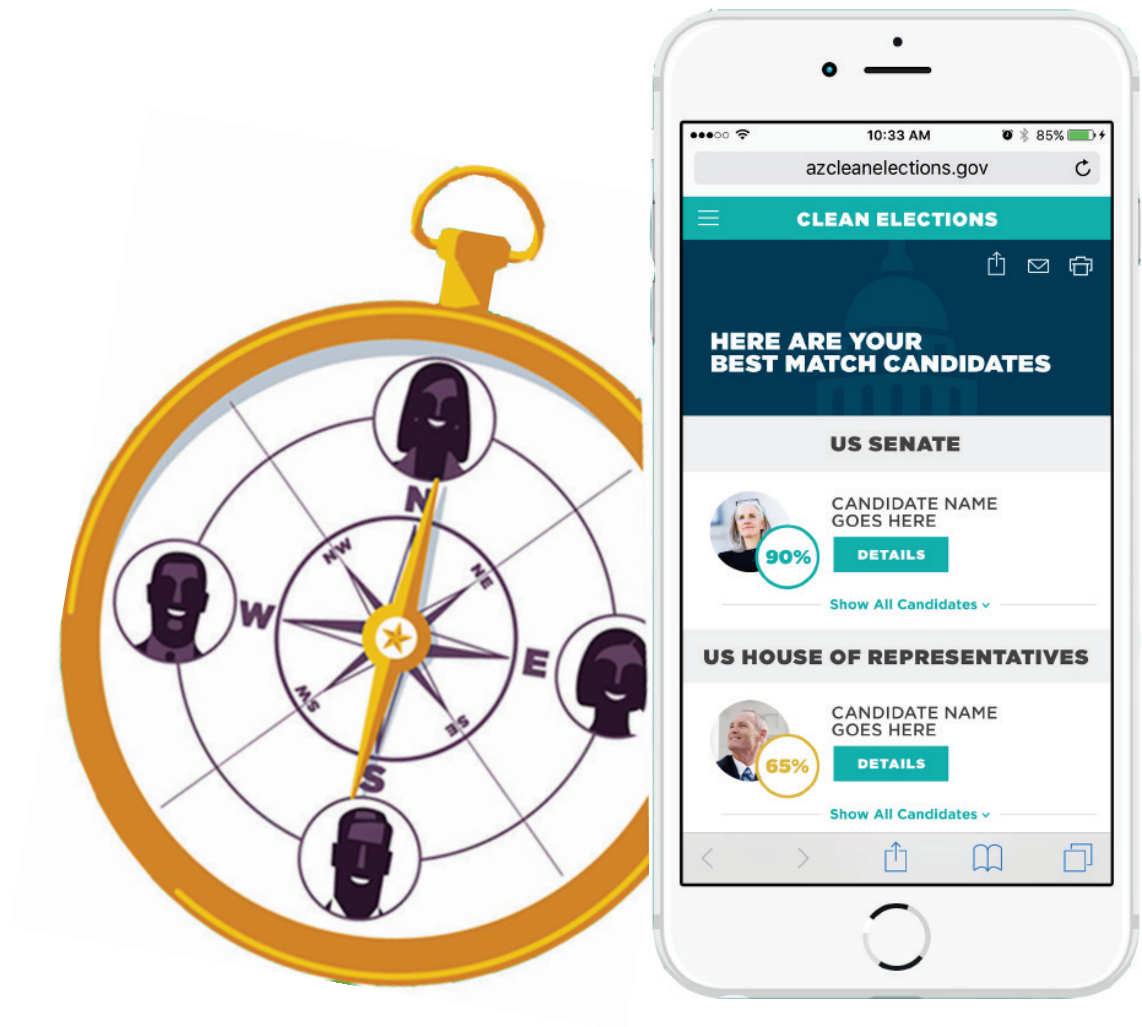
The Vote Informed Campaign continued throughout the 2016 election cycle. The emphasis of this campaign was to help voters become more familiar with key election dates and processes, connect voters to straight-forward information about the candidates and issues on the ballot, and to encourage overall voter participation in Arizona elections. Because an informed voter is an empowered voter.





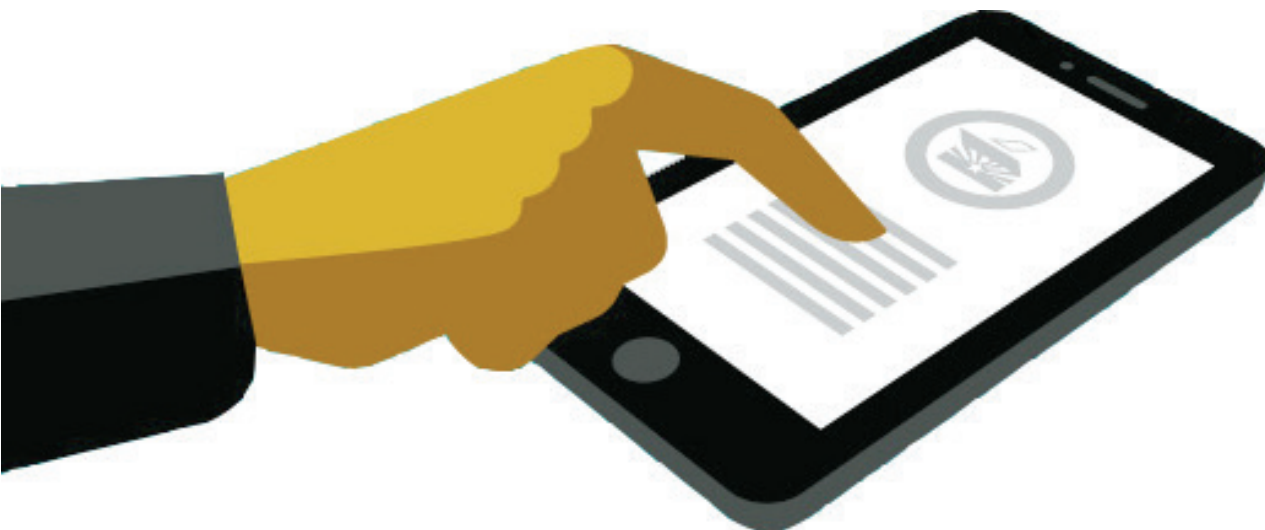
# Candidate Compass Tool

The Commission launched a brand new voter education tool in 2016, named the “Candidate Compass”. The compass was designed to allow voters to see how Arizona’s statewide and legislative candidates align with issues voters care about most. Users simply answer a few questions and see who shares their views. It’s that simple.



# Smart Device Application

The Commission launched a “Smart Device Application” in March 2015 that allowed voters to keep in touch with state lawmakers and other elected officials. In 2016, the application evolved into an informative election tool and assisted in providing voters with unbiased voter information on-the-go. Voters were able to mark in the app which candidates they would vote for on their respective ballots to maximize the ease and efficiency of voting informed. The main functions of the application include finding information on Arizona elections, including where to vote, upcoming deadlines, candidate statements and contact information, debate schedules and more. The Clean Elections Application is available for iOS users, while the android version is currently in development.



# Clean Elections

## Training & Guides

Education is a key component to the mission of the Commission. In 2016, the Commission continued to provide information to interested groups and potential candidates through speaking engagements, training workshops, as well as through publications on our enhanced agency website. Each election cycle the Commission develops a guide to assist participating candidates as they navigate the political campaign process and to inform non-participating candidates, and other groups involved in elections, about the Clean Elections Act and rules. The guide covers important topics such as requirements of the Clean Elections Act and Rules, filing and reporting deadlines, how to become a Clean Elections participating candidate, and how to qualify for funding.



Participating candidates are required to attend one Clean Elections Candidate Training Workshop during the election cycle. The workshops are open to the public and designed to provide information to prospective candidates, or those who are assisting participating candidates, about the requirements of the Clean Elections Act.

During 2016, the Commission conducted 14 candidate training workshops both online and in person. A total of 96 individuals attended these workshops, 63 of them being candidates and the remaining 33 were members of the public.

# Candidate Debates

The Citizens Clean Elections Commission proudly sponsors candidate debates prior to the Primary & General Election for statewide and legislative candidates. Participating candidates are required to attend the debates and Non-participating or traditional candidates are invited to attend and are encouraged to participate. The debates occurred throughout Arizona and all statewide debates were televised. Candidates must appear in person, not by proxy or electronically, unless to accommodate a disability.

All debate videos may be seen in their entirety on the Commission's [YouTube Channel](#) and are close captioned for the hearing impaired.

Debate Feedback/Quotes:

- “Excellent program! I learned a great deal of information”
- “The best debate for local politicians. Don’t change it.”

### 12 Primary Election Debates:

11 legislative: 38 of 46 (82.6%) candidates attended  
1 statewide: 5 of 5 (100%) candidates attended

### 24 General Election Debates:

23 legislative: 74 of 110  
(67.2%) candidates attended

1 statewide: 5 of 5  
(100%) candidates attended

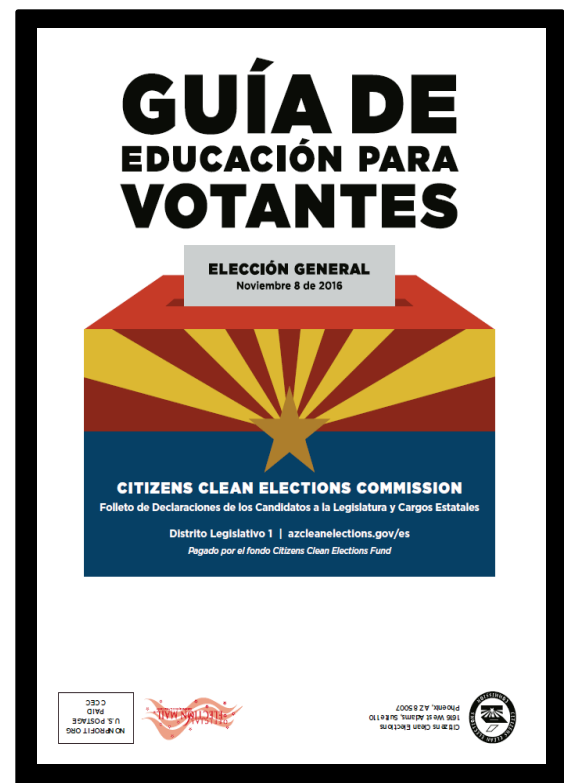
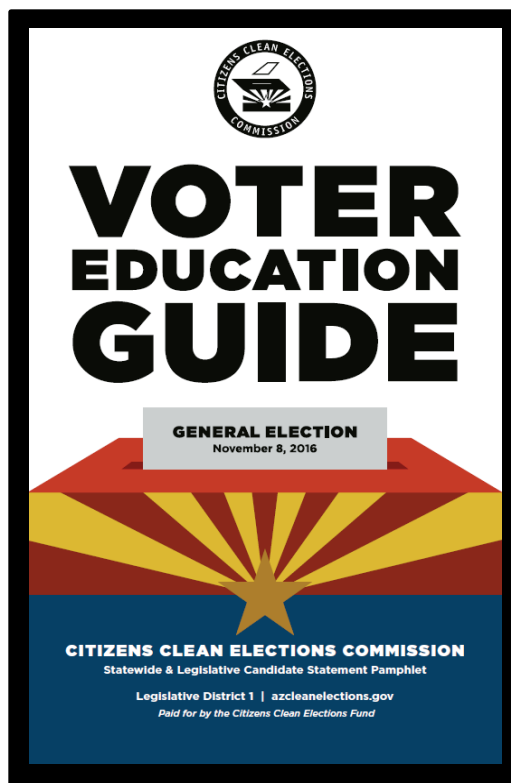


General Election Corporation  
Commission Debate

# Candidate Statement Pamphlet

Candidate Statement Pamphlets were created, printed, and distributed twice in 2016. The pamphlets contained a 200-word statement and a picture from each statewide and legislative candidate who chooses to participate. The Commission distributed over 1.9 million copies of the Primary election pamphlet and another 1.9 million copies of the General election pamphlet, for a total of 3.8 million, to households containing a registered Arizona voter. For the Primary election there were a total of 172 statements submitted, out of 175 eligible candidates (98.2%). Whereas the guide for the General election contained 143 submitted statements, out of 144 eligible candidates (99.3%).

For the first time the Commission was able to produce “district specific” pamphlets, which created a more user-friendly experience for the voters. This drastically reduced the cost and totaled a savings of \$930,014, when comparing the 2016 election cycle to the 2014 election cycle!



# Grassroots Outreach

In an ongoing effort to increase outreach to Arizona voters, Clean Elections was able to participate in the following:

- Multiple “Election Officials of Arizona” meetings
- Multiple “Arizona Municipal Clerks’ Association” meetings
- Partnered with the Apache, Coconino and Navajo County Recorder’s Offices, and the “Navajo Nation”, to host the Rural Addressing Conference – January 13<sup>th</sup>
- Celebrate Mesa Event – April 16<sup>th</sup>
- National Voter Registration Day, with ASU – September 27<sup>th</sup>
- A voter registration drive in partnership with the “Salt River Pima-Maricopa Indian Community” – April 28<sup>th</sup>





# Campaign Research

The Commission conducted post campaign research that began right after the 2016 General Election. These results were compared to the 2015 baseline study.

## Key Findings:

- While voters agree that voting is important, they do not recognize their own influence, especially in state and local elections. More work needs to be done in educating voters on the impact they can have.
- Debates are the most used source to inform election opinions, and nearly 4 in 10 people say they are using it more than in previous elections.
- The Voter Education Guide (Page 7) is considered the #1 unbiased source of information, however, it is only considered so by about 1/3 of voters.

The Commission also partnered with the ASU Morrison Institute to conduct research on voters and where they get their candidate and campaign information and from what “trusted sources”. This research was the center of Morrison’s annual State of our State conference held on November 16, 2016.






Pictured (left to right): Former U.S. Sen. Jon Kyl, Former U.S. Rep. Ed Pastor, Grady Gammage, Jr.

# Website & Social Media

The Commission saw a significant increase in its engagement with voters online. Utilizing social media channels has allowed the Commission to instantly connect with voters on timely and important election related issues. Voters and candidates alike can follow us on social media for more information about elections and running for office.

Social media sites such as Twitter, YouTube and Facebook were utilized and the chart below displays the amount of followers/likes throughout the previous years.

Social Media Traffic:

	2014	2015	2016	% from 2015-2016
	4,904 Likes	23,540 Likes	33,119 Likes	+41%
	908 Followers	1,070 Followers	1,270 Followers	+19%
	83,900+ Views	437,000+ Views	536,000+ Views	+23%

\*\*The methodology for calculating YouTube views changed slightly. The totals now reflect the number of views within that calendar year exclusively.

Website Traffic:

Year	Sessions	Users	% of New Users	Page Views
2016	382,013	304,543	79.54%	646,840
2015	117,372	98,672	83.9%	150,088
2014	73,121	55,292	75.3%	175,335
2013	32,299	7,297	60.7%	39,773



# Financial Information

## Funding Sources

Citizens Clean Elections Commission revenue comes from the following sources:

- 10% surcharge on all civil penalties and criminal fines
- Civil penalties paid by candidates.
- \$5 qualifying contributions collected from participating candidates.

CY 2016** Revenues	Actual
Court Assessments	\$7,242,242
Commission Assessments	\$15,000
\$5 Tax Check-off (late tax filings)*	\$295
Miscellaneous	\$81,246

## Controls on Spending

The Commission's total expenditures cannot exceed seven times the number of Arizona resident personal income tax returns filed during the previous calendar year. Up to 10% of the total expenditure cap for administration and enforcement purposes may be used. The Commission may make public education paid media expenditures up to 10% of the total expenditure cap as well. (A.R.S. §16-949) The 2015 expenditure caps were as follows:

- Total Expenditure Cap: \$19,896,471
- Administration & Enforcement Cap: \$1,989,647
- Public Education Paid Media Expenditure Cap: \$1,989,647

CY 2016** Expenditures	Admin & Enforcement	Voter Education	Candidate Funding
Total	\$742,407	\$4,807,111	\$2,150,000

Clean Elections is funded by voluntary contributions and surcharges on criminal penalties and violations, such as traffic tickets.

Not a single dollar of Clean Elections funding comes from the State's General Fund.

Rather than taking money from taxpayers, Clean Elections has donated \$74 million to the State's General Fund since its inception through 2016.

The removal of the \$5 check-off box on Arizona state income tax return forms and dollar-for-dollar tax credits caused a decrease in revenue to the Clean Elections Fund, and as a result the Commission was unable to transfer excess monies to the General Fund in 2016.

\*Previously, Arizona citizens could contribute voluntarily through a \$5 check-off box on Arizona state income tax return forms and through dollar for dollar tax credits. This portion of the Act was removed in 2012; however, late tax filers may still contribute.

\*\*The Clean Elections Commission operates on a calendar year budget rather than the State's fiscal year budget.

# Enforcement, Audits & Litigation

The Commission enforces the Citizens Clean Elections Act and Commission rules which are a part of the Arizona Administrative Code. The Act and Commission rules contain specific campaign finance provisions and limitations.

In order to ensure campaign spending occurs in an ethical manner as specified by the Act and Rules, Commission staff monitors campaign finance reports filed pursuant to the Act and if necessary, they may request financial records. The Commission has the authority to subpoena witnesses, take evidence, and require, by subpoena, the production of any books, papers, records or other material relevant to an enforcement matter.

Potential penalties for violations of the Act range from monetary penalties, the disqualification of a candidate or forfeiture of office. The Commission settles most enforcement matters in an amicable fashion.

Additionally, the Commission conducts random audits to ensure compliance with the Act and Commission rules. Candidates are randomly selected during a public Commission meeting. The audits are completed by an independent auditing agency. Candidate audits are selected during election years after the Commission has disbursed funds to qualified candidates.

In 2016, the Commission randomly selected 29 candidates for audits. This included 26 legislative candidates and 3 statewide candidates who received Clean Elections funding in either the 2016 primary or general election periods. Audits will be presented to the Commission for their approval in 2017.

## Enforcement

The Commission acts on both external and internally filed complaints.

During 2016, the Commission resolved 3 complaints arising from the 2016 election cycle. The Commission anticipates the 6 remaining matters from the 2016 election cycle will conclude during 2017.

# 2016 Candidate Summary

During the Primary election 178 candidates sought statewide and legislative offices, with 41 of those individuals participating in the Clean Elections system. The Clean Elections candidate participation rate was 23% in the Primary election.

During the General election there were 144 candidates seeking statewide and legislative offices, 37 of which were participating candidates. The Clean Elections candidate participation rate was 25.7% in the General election.

In 2016, more than \$2.1 million was distributed from the Clean Elections Fund to participating candidates.

The following pages list every candidate for statewide and legislative office who raised funds and qualified for the ballot. Please note each state legislative district elects two representatives to serve in the House of Representatives and one senator to serve in the Senate. This listing is compiled using data provided at [www.azsos.gov](http://www.azsos.gov).

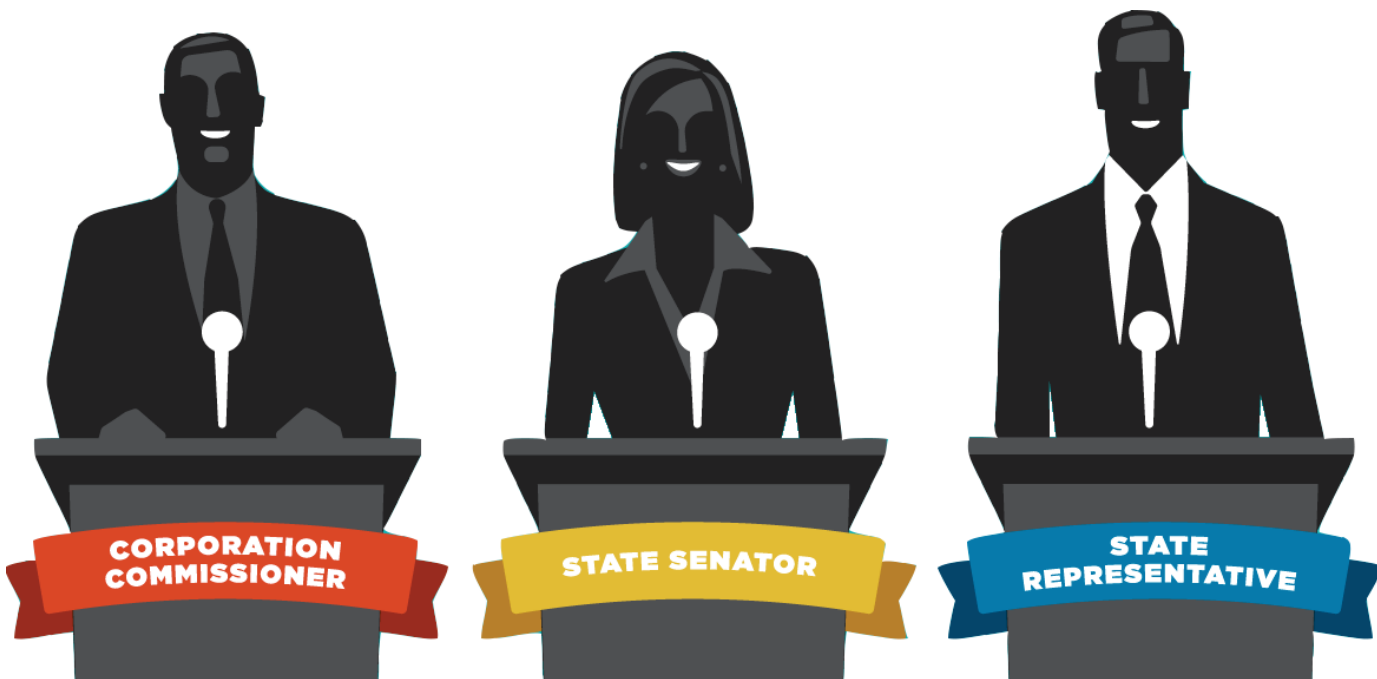
## Arizona's Citizens Clean Elections Act

The public financing system is voluntary; candidates who choose to participate in this system to receive public funding are known as participating candidates. Candidates who choose to raise private campaign funds are known as non-participating/traditional candidates.

To become a Clean Elections participating candidate, a candidate must raise a number of \$5 qualifying contributions during a defined qualifying period. Clean Elections participating candidates agree to forgo contributions from political action committees.

# 2016 PRIMARY ELECTION CANDIDATE LISTING

Reallocation Notice: Pursuant to A.R.S. §16-952(D), a one-party-dominant legislative district is a district in which the number of registered voters registered in the party with the highest number of registered voters exceeds the number of registered voters to each of the other parties by an amount at least as high as ten percent of the total number of voters registered in the district. In 2016, qualifying legislative candidates received \$16,044 in funding for the primary. Legislative candidates who were eligible, and chose, to reallocate received \$24,066 for the primary instead of the general election. Candidates are eligible to reallocate their funding if they are in a one-party dominant district, are in the dominant party, and have a contested primary election.



# List of All Candidate Committees for the 2016 Election

Committees (Total / Participating) = 178 / 41

					Primary Initial Disbursement
<b>Corporation Commissioner</b>					
Burns, Robert	201600063	Republican			0.00
Chabin, Tom	201600442	Democratic	Participating		102,711.00
Dunn, Boyd	201600545	Republican			0.00
Melvin, Al	201600252	Republican	Participating		102,711.00
Mundell, Bill	201600443	Democratic	Participating		102,711.00
Tobin, Andrew	201600513	Republican			0.00
					<b>308,133.00</b>
<b>State Senator - District 1</b>					
Fann, Karen	201600168	Republican			0.00
					<b>0.00</b>
<b>State Representative - District 1</b>					
Campbell, Noel	201600049	Republican	Participating		24,066.00
Davis, Arlo G "Chip"	201600238	Republican			0.00
Knauer, Haryaksha	201600419	Green			0.00
Pierson, Peter	201600517	Democratic	Participating		16,044.22
Stringer, David	201600370	Republican			0.00
					<b>40,110.22</b>
<b>State Senator - District 2</b>					
Dallessandro, Andrea	201600089	Democratic	Participating		16,044.00
Kais, Shelley	201600288	Republican	Participating		16,044.00
					<b>32,088.00</b>
<b>State Representative - District 2</b>					
Ackerley, John	201600114	Republican	Participating		16,044.00
Baumann, Aaron	201600126	Democratic			0.00
Gabaldon, Rosanna	201600086	Democratic	Participating		16,044.00
Hernandez, Daniel	201600418	Democratic			0.00
					<b>32,088.00</b>

Enter Filer ID at (<http://apps.azsos.gov/apps/election/cfs/search/CandidateSearch.aspx>) to view a candidate's campaign finance reports

2/10/2017

# List of All Candidate Committees for the 2016 Election

Committees (Total / Participating) = 178 / 41

				Primary Initial Disbursement
<b>State Senator - District 3</b>				
Cajero Bedford, Olivia	201600076	Democratic		0.00
				<b>0.00</b>
<b>State Representative - District 3</b>				
Cizek, Edward	201600568	Green		0.00
Gonzales, Sally	201600425	Democratic		0.00
Saldade, Macario	201600183	Democratic		0.00
				<b>0.00</b>
<b>State Senator - District 4</b>				
Otondo, Lisa	201600344	Democratic		0.00
				<b>0.00</b>
<b>State Representative - District 4</b>				
Fernandez, Charlene	201600129	Democratic		0.00
Rubalcava, Jesus	201600368	Democratic	Participating	16,044.00
				<b>16,044.00</b>
<b>State Senator - District 5</b>				
Borrelli, Sonny	201600293	Republican		0.00
Gould, Ron	201600275	Republican		0.00
				<b>0.00</b>
<b>State Representative - District 5</b>				
Biasiucci, Leo	201600505	Green		0.00
Cobb, Regina	201600180	Republican		0.00
Jones, Jennifer	201600271	Republican		0.00
Medrano, Sam	201600393	Republican		0.00
Mosley, Paul	201600320	Republican		0.00
Weisser, Beth	201600298	Democratic		0.00
				<b>0.00</b>

Enter Filer ID at (<http://apps.azsos.gov/apps/election/cfs/search/CandidateSearch.aspx>) to view a candidate's campaign finance reports

2/10/2017

# List of All Candidate Committees for the 2016 Election

Committees (Total / Participating) = 178 / 41

				Primary Initial Disbursement
<b>State Senator - District 6</b>				
(Check) Bagley, Nikki	201600383	Democratic		0.00
Allen, Sylvia Tenney	201600173	Republican		0.00
				<b>0.00</b>
<b>State Representative - District 6</b>				
Barton, Brenda	201600145	Republican		0.00
Martinez, Alex	201600426	Democratic		0.00
Thorpe, Robert	201600045	Republican		0.00
				<b>0.00</b>
<b>State Senator - District 7</b>				
Begay, Steven	201600501	Democratic		0.00
Peshlakai, Jamescita	201600352	Democratic		0.00
				<b>0.00</b>
<b>State Representative - District 7</b>				
Benally, Wenona	201600507	Democratic		0.00
Descheenie, Eric	201600463	Democratic		0.00
				<b>0.00</b>
<b>State Senator - District 8</b>				
McGuire, Barbara	201600125	Democratic	Participating	16,044.00
Pratt, Frank	201600190	Republican		0.00
				<b>16,044.00</b>
<b>State Representative - District 8</b>				
Casillas (Candidate), Carmen	201600148	Democratic	Participating	16,044.00
Cook, David	201600459	Republican		0.00
Shope, Thomas	201600170	Republican		0.00
				<b>16,044.00</b>

Enter Filer ID at (<http://apps.azsos.gov/apps/election/cfs/search/CandidateSearch.aspx>) to view a candidate's campaign finance reports

2/10/2017

# List of All Candidate Committees for the 2016 Election

Committees (Total / Participating) = 178 / 41

				Primary Initial Disbursement
<b>State Senator - District 9</b>				
Farley, Steve	201600188	Democratic		0.00
				<b>0.00</b>
<b>State Representative - District 9</b>				
Friese, Randall	201600195	Democratic		0.00
Henderson, Ana	201600217	Republican	Participating	16,044.00
Kopec, Matt	201600416	Democratic		0.00
Powers Hannley, Pamela	201600269	Democratic	Participating	16,044.00
				<b>32,088.00</b>
<b>State Senator - District 10</b>				
Bradley, David	201600204	Democratic		0.00
Phelps, Randall	201600500	Republican		0.00
				<b>0.00</b>
<b>State Representative - District 10</b>				
Clodfelter, Todd	201600194	Republican	Participating	16,044.00
Engel, Kirsten	201600380	Democratic		0.00
Frogge, Courtney	201600134	Democratic		0.00
Mach, Stefanie	201600118	Democratic		0.00
				<b>16,044.00</b>
<b>State Senator - District 11</b>				
Atchue, Ralph	201600412	Democratic		0.00
Smith, Steve	201600312	Republican		0.00
				<b>0.00</b>

Enter Filer ID at (<http://apps.azsos.gov/apps/election/cfs/search/CandidateSearch.aspx>) to view a candidate's campaign finance reports

2/10/2017



# List of All Candidate Committees for the 2016 Election

Committees (Total / Participating) = 178 / 41

				Primary Initial Disbursement
<b>State Representative - District 11</b>				
Finchem, Mark	201600041	Republican		0.00
Hammond, Corin	201600161	Democratic	Participating	16,044.00
Leach, Venden "Vince"	201600123	Republican		0.00
				<b>16,044.00</b>
<b>State Senator - District 12</b>				
Brown, Elizabeth	201600450	Democratic	Participating	0.00
Lindblom, James	201600504	Republican		0.00
Petersen, Warren	201600171	Republican		0.00
				<b>0.00</b>
<b>State Representative - District 12</b>				
Farnsworth, Eddie	201600357	Republican		0.00
Grantham, Travis	201600462	Republican		0.00
Lewis, Lacinda	201600527	Republican		0.00
				<b>0.00</b>
<b>State Senator - District 13</b>				
Landis, Diane	201600597	Republican		0.00
Montenegro, Steve	201600033	Republican		0.00
				<b>0.00</b>
<b>State Representative - District 13</b>				
Graves, Isha	201600540	Democratic		0.00
Kouns, Ray	201600326	Republican		0.00
Mitchell, Darin	201600196	Republican		0.00
Shooter, Don	201600328	Republican		0.00
				<b>0.00</b>

Enter Filer ID at (<http://apps.azsos.gov/apps/election/cfs/search/CandidateSearch.aspx>) to view a candidate's campaign finance reports

2/10/2017

# List of All Candidate Committees for the 2016 Election

Committees (Total / Participating) = 178 / 41

				Primary Initial Disbursement
<b>State Senator - District 14</b>				
Alvarez, Jaime	201600471	Democratic	Participating	16,044.00
Griffin, Gail	201600030	Republican		0.00
				<b>16,044.00</b>
<b>State Representative - District 14</b>				
Barger, Dennis	201600360	Republican		0.00
Holmes, Mike	201600315	Democratic	Participating	16,044.00
John, Drew	201600112	Republican		0.00
Lindstrom, Jason	201600588	Democratic	Participating	16,044.00
Nutt, Becky	201600310	Republican	Participating	24,066.00
Sizer, Anthony	201600296	Republican	Participating	24,066.00
				<b>80,220.00</b>
<b>State Senator - District 15</b>				
Barto, Nancy	201600164	Republican		0.00
MacBeth, Tonya	201600455	Democratic	Participating	16,044.00
				<b>16,044.00</b>
<b>State Representative - District 15</b>				
Allen, John	201600091	Republican		0.00
Carter, Heather	201600191	Republican		0.00
Dwyer, Brandon	201600451	Democratic	Participating	16,044.00
				<b>16,044.00</b>
<b>State Senator - District 16</b>				
Farnsworth, David	201600175	Republican		0.00
Prior, Scott	201600116	Democratic	Participating	16,044.00
				<b>16,044.00</b>

Enter Filer ID at (<http://apps.azsos.gov/apps/election/cfs/search/CandidateSearch.aspx>) to view a candidate's campaign finance reports

2/10/2017

# List of All Candidate Committees for the 2016 Election

Committees (Total / Participating) = 178 / 41

					Primary Initial Disbursement
<b>State Representative - District 16</b>					
Coleman, Doug	201600528	Republican			0.00
Fillmore, John	201600325	Republican	Participating		24,066.00
Prior, Cara	201600339	Democratic	Participating		16,044.00
Stevens, Adam	201600242	Republican			0.00
Stinard, Sharon	201600287	Democratic	Participating		16,044.00
Townsend, Kelly	201600221	Republican			0.00
					<b>56,154.00</b>
<b>State Senator - District 17</b>					
Weichert, Steven	201600391	Democratic	Participating		16,044.00
Yarbrough, Steve	201600187	Republican			0.00
					<b>16,044.00</b>
<b>State Representative - District 17</b>					
Mesnard, J.D.	201600193	Republican			0.00
Pawlik, Jennifer	201600390	Democratic	Participating		16,044.00
Weninger, Jeff	201600122	Republican			0.00
					<b>16,044.00</b>
<b>State Senator - District 18</b>					
Bowie, Sean	201600080	Democratic			0.00
Dial, Jeff	201600001	Republican			0.00
Schmuck, Frank	201600560	Republican			0.00
					<b>0.00</b>
<b>State Representative - District 18</b>					
Epstein, Denise "Mitzi"	201600130	Democratic			0.00
Macias, Linda	201600531	Green			0.00
Norgaard, Jill	201600178	Republican			0.00
Robson, Bob	201600179	Republican			0.00
					<b>0.00</b>

Enter Filer ID at (<http://apps.azsos.gov/apps/election/cfs/search/CandidateSearch.aspx>) to view a candidate's campaign finance reports

2/10/2017

# List of All Candidate Committees for the 2016 Election

Committees (Total / Participating) = 178 / 41

				Primary Initial Disbursement
<b>State Senator - District 19</b>				
Contreras, Guadalupe	201600203	Democratic		0.00
				<b>0.00</b>
<b>State Representative - District 19</b>				
Cardenas, Mark	201600201	Democratic		0.00
Espinoza, Jose	201600202	Democratic		0.00
				<b>0.00</b>
<b>State Senator - District 20</b>				
Herrera, Larry	201600392	Democratic	Participating	16,044.00
Yee, Kimberly	201600165	Republican		0.00
				<b>16,044.00</b>
<b>State Representative - District 20</b>				
Boyer, Paul	201600184	Republican		0.00
Gilfillan, Christopher	201600340	Democratic		0.00
Kern, Anthony	201600046	Republican		0.00
				<b>0.00</b>
<b>State Senator - District 21</b>				
Lesko, Debbie	201600151	Republican		0.00
				<b>0.00</b>
<b>State Representative - District 21</b>				
Payne, Kevin	201600259	Republican		0.00
Rasmussen-Lacotta, Deanna	201600541	Democratic	Participating	16,044.00
Rivero, Jose	201600236	Republican		0.00
				<b>16,044.00</b>

Enter Filer ID at (<http://apps.azsos.gov/apps/election/cfs/search/CandidateSearch.aspx>) to view a candidate's campaign finance reports

2/10/2017

# List of All Candidate Committees for the 2016 Election

Committees (Total / Participating) = 178 / 41

				Primary Initial Disbursement
<b>State Senator - District 22</b>				
Burges, Judy	201600189	Republican		0.00
Muscato, Michael	201600467	Democratic	Participating	16,044.00
				<b>16,044.00</b>
<b>State Representative - District 22</b>				
Hernandez, Manuel	201600506	Democratic	Participating	16,044.00
Livingston, David	201600197	Republican		0.00
Lovas, Phil	201600181	Republican		0.00
				<b>16,044.00</b>
<b>State Senator - District 23</b>				
Kavanagh, John	201600172	Republican		0.00
				<b>0.00</b>
<b>State Representative - District 23</b>				
Caputi, Tammy	201600343	Democratic	Participating	16,044.00
Lawrence, Jay	201600096	Republican		0.00
Ugenti-Rita, Michelle	201600355	Republican		0.00
				<b>16,044.00</b>
<b>State Senator - District 24</b>				
Hobbs, Katie	201600199	Democratic		0.00
				<b>0.00</b>
<b>State Representative - District 24</b>				
Alston, Lela	201600192	Democratic		0.00
Clark, Ken	201600316	Democratic		0.00
				<b>0.00</b>

Enter Filer ID at (<http://apps.azsos.gov/apps/election/cfs/search/CandidateSearch.aspx>) to view a candidate's campaign finance reports

2/10/2017

# List of All Candidate Committees for the 2016 Election

Committees (Total / Participating) = 178 / 41

				Primary Initial Disbursement
<b>State Senator - District 25</b>				
Worsley, Robert	201600422	Republican		0.00
				<b>0.00</b>
<b>State Representative - District 25</b>				
Bowers, Russell W "Rusty"	201600174	Republican		0.00
Groen, Ross	201600557	Republican		0.00
Rahn, Kathleen	201600465	Democratic	Participating	16,044.00
Udall, Michelle	201600496	Republican		0.00
				<b>16,044.00</b>
<b>State Senator - District 26</b>				
Lucier, David	201600377	Democratic		0.00
Mendez, Juan	201600354	Democratic	Participating	16,044.00
				<b>16,044.00</b>
<b>State Representative - District 26</b>				
Adkins, Steven	201600456	Republican		0.00
Blanc, Isela	201600397	Democratic	Participating	16,044.00
Martinez, Michael	201600300	Democratic	Participating	16,044.00
Plumlee, Celeste	201600389	Democratic		0.00
Salman, Athena	201600385	Democratic	Participating	16,044.00
Trujillo, Cara Nicole	201600466	Green		0.00
				<b>48,132.00</b>
<b>State Senator - District 27</b>				
Miranda Saenz, Maritza	201600446	Democratic		0.00
Miranda, Catherine	201600035	Democratic		0.00
				<b>0.00</b>

Enter Filer ID at (<http://apps.azsos.gov/apps/election/cfs/search/CandidateSearch.aspx>) to view a candidate's campaign finance reports

2/10/2017

# List of All Candidate Committees for the 2016 Election

Committees (Total / Participating) = 178 / 41

			Primary Initial Disbursement
<b>State Representative - District 27</b>			
Blackwell, Edward	201600594	Democratic	0.00
Bolding, Reginald	201600101	Democratic	0.00
Braun, A. David	201600348	Democratic	0.00
Rios, Rebecca	201600113	Democratic	0.00
			<b>0.00</b>
<b>State Senator - District 28</b>			
Brophy Mcgee, Kate	201600177	Republican	0.00
Meyer, Eric	201600166	Democratic	0.00
			<b>0.00</b>
<b>State Representative - District 28</b>			
Bowers, Kenneth	201600230	Republican	0.00
Butler, Kelli	201600317	Democratic	0.00
Gutier III, Alberto	201600490	Republican	0.00
Hamway, Mary	201600302	Republican	0.00
Morales, Matthew	201600284	Republican	0.00
Syms, Maria	201600525	Republican	0.00
			<b>0.00</b>
<b>State Senator - District 29</b>			
Hernandez, Lydia	201600405	Democratic	0.00
Nuttle, Crystal	201600572	Republican	0.00
Quezada, Martin	201600150	Democratic	0.00
			<b>0.00</b>

Enter Filer ID at (<http://apps.azsos.gov/apps/election/cfs/search/CandidateSearch.aspx>) to view a candidate's campaign finance reports

2/10/2017

# List of All Candidate Committees for the 2016 Election

Committees (Total / Participating) = 178 / 41

				Primary Initial Disbursement
<b>State Representative - District 29</b>				
Alfaro, Roberto	201600573	Republican		0.00
Andrade, Richard	201600144	Democratic		0.00
Cantu, Rosa	201600404	Democratic		0.00
Chavez, Cesar	201600552	Democratic		0.00
Pimentel, Marshall	201600620	Democratic		0.00
Wilson, John	201600577	Republican	Participating	0.00
				<b>0.00</b>
<b>State Senator - District 30</b>				
Lyon, John	201600394	Republican		0.00
Meza, Robert	201600029	Democratic		0.00
				<b>0.00</b>
<b>State Representative - District 30</b>				
Cox, Gary	201600281	Republican		0.00
Larkin, Jonathan	201600182	Democratic		0.00
Martinez, Ray	201600473	Democratic		0.00
Navarrete, Otoniel	201600444	Democratic		0.00
				<b>0.00</b>
<b>Grand Total</b>				<b>917,805.22</b>

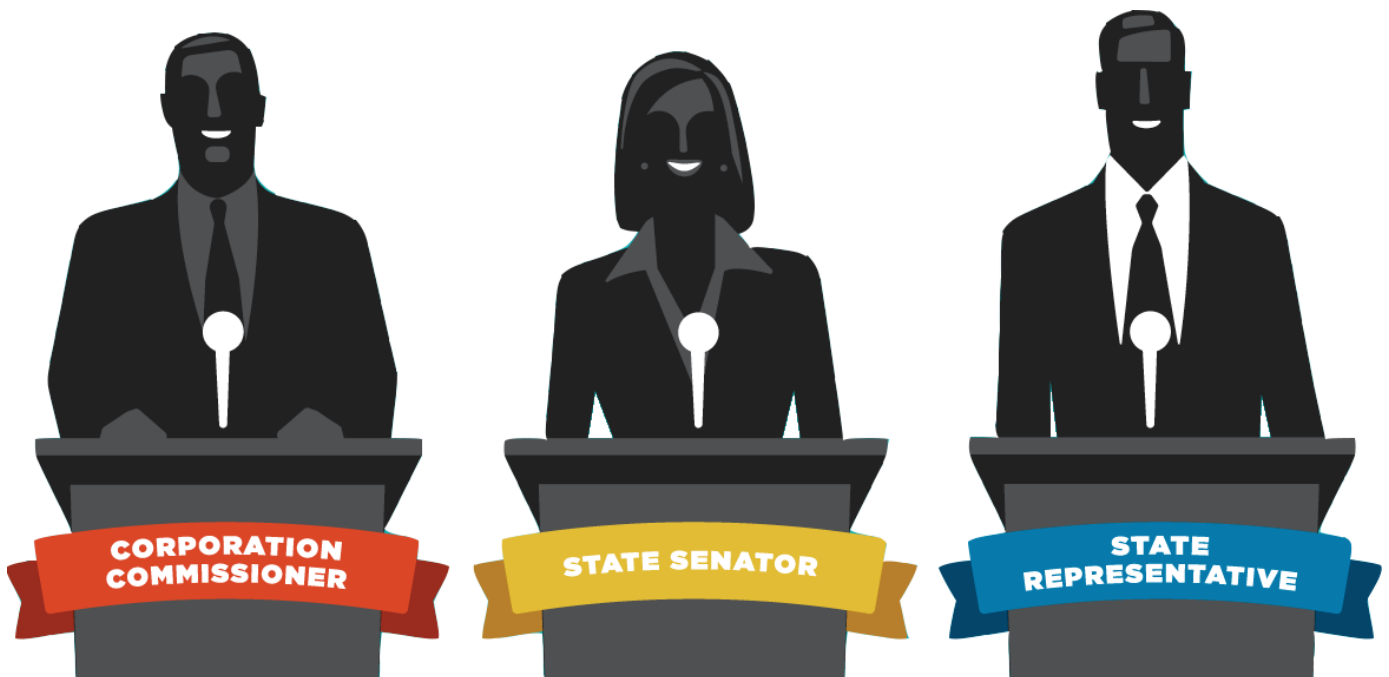
Enter Filer ID at (<http://apps.azsos.gov/apps/election/cfs/search/CandidateSearch.aspx>) to view a candidate's campaign finance reports

2/10/2017



# 2016 GENERAL ELECTION CANDIDATE LISTING

Reallocation Notice: Pursuant to A.R.S. §16-952(D), a one-party-dominant legislative district is a district in which the number of registered voters registered in the party with the highest number of registered voters exceeds the number of registered voters to each of the other parties by an amount at least as high as ten percent of the total number of voters registered in the district. In 2016, qualifying legislative candidates received \$16,044 in funding for the primary. Legislative candidates who were eligible, and chose, to reallocate received \$24,066 for the primary instead of the general election. Candidates are eligible to reallocate their funding if they are in a one-party dominant district, are in the dominant party, and have a contested primary election.



# List of All Candidate Committees for the 2016 Election

Committees (Total / Participating) = 144 / 37

					General Initial Disbursement
<b>Corporation Commissioner</b>					
Burns, Robert	201600063	Republican			0.00
Chabin, Tom	201600442	Democratic	Participating		154,067.00
Dunn, Boyd	201600545	Republican			0.00
Mundell, Bill	201600443	Democratic	Participating		154,067.00
Tobin, Andrew	201600513	Republican			0.00
					<b>308,134.00</b>
<b>State Senator - District 1</b>					
Fann, Karen	201600168	Republican			0.00
					<b>0.00</b>
<b>State Representative - District 1</b>					
Campbell, Noel	201600049	Republican	Participating		16,044.00
Knauer, Haryaksha	201600419	Green			0.00
Pierson, Peter	201600517	Democratic	Participating		24,066.00
Stringer, David	201600370	Republican			0.00
					<b>40,110.00</b>
<b>State Senator - District 2</b>					
Dalessandro, Andrea	201600089	Democratic	Participating		24,066.00
Kais, Shelley	201600288	Republican	Participating		24,066.00
					<b>48,132.00</b>
<b>State Representative - District 2</b>					
Ackerley, John	201600114	Republican	Participating		24,066.00
Gabaldon, Rosanna	201600086	Democratic	Participating		24,066.00
Hernandez, Daniel	201600418	Democratic			0.00
					<b>48,132.00</b>

Enter Filer ID at (<http://apps.azsos.gov/apps/election/cfs/search/CandidateSearch.aspx>) to view a candidate's campaign finance reports

2/10/2017

# List of All Candidate Committees for the 2016 Election

Committees (Total / Participating) = 144 / 37

				General Initial Disbursement
<b>State Senator - District 3</b>				
Cajero Bedford, Olivia	201600076	Democratic		0.00
				<b>0.00</b>
<b>State Representative - District 3</b>				
Cizek, Edward	201600568	Green		0.00
Gonzales, Sally	201600425	Democratic		0.00
Saldade, Macario	201600183	Democratic		0.00
				<b>0.00</b>
<b>State Senator - District 4</b>				
Otondo, Lisa	201600344	Democratic		0.00
				<b>0.00</b>
<b>State Representative - District 4</b>				
Fernandez, Charlene	201600129	Democratic		0.00
Rubalcava, Jesus	201600368	Democratic	Participating	24,066.00
				<b>24,066.00</b>
<b>State Senator - District 5</b>				
Borrelli, Sonny	201600293	Republican		0.00
				<b>0.00</b>
<b>State Representative - District 5</b>				
Biasiucci, Leo	201600505	Green		0.00
Cobb, Regina	201600180	Republican		0.00
Mosley, Paul	201600320	Republican		0.00
Weisser, Beth	201600298	Democratic		0.00
				<b>0.00</b>

Enter Filer ID at (<http://apps.azsos.gov/apps/election/cfs/search/CandidateSearch.aspx>) to view a candidate's campaign finance reports

2/10/2017

# List of All Candidate Committees for the 2016 Election

Committees (Total / Participating) = 144 / 37

					General Initial Disbursement
<b>State Senator - District 6</b>					
(Check) Bagley, Nikki	201600383	Democratic			0.00
Allen, Sylvia Tenney	201600173	Republican			0.00
					<b>0.00</b>
<b>State Representative - District 6</b>					
Barton, Brenda	201600145	Republican			0.00
Martinez, Alex	201600426	Democratic			0.00
Thorpe, Robert	201600045	Republican			0.00
					<b>0.00</b>
<b>State Senator - District 7</b>					
Peshlakai, Jamescita	201600352	Democratic			0.00
					<b>0.00</b>
<b>State Representative - District 7</b>					
Benally, Wenona	201600507	Democratic			0.00
Descheenie, Eric	201600463	Democratic			0.00
					<b>0.00</b>
<b>State Senator - District 8</b>					
McGuire, Barbara	201600125	Democratic	Participating		24,066.00
Pratt, Frank	201600190	Republican			0.00
					<b>24,066.00</b>
<b>State Representative - District 8</b>					
Casillas (Candidate), Carmen	201600148	Democratic	Participating		24,066.00
Cook, David	201600459	Republican			0.00
Shope, Thomas	201600170	Republican			0.00
					<b>24,066.00</b>

Enter Filer ID at (<http://apps.azsos.gov/apps/election/cfs/search/CandidateSearch.aspx>) to view a candidate's campaign finance reports

2/10/2017

# List of All Candidate Committees for the 2016 Election

Committees (Total / Participating) = 144 / 37

				General Initial Disbursement
<b>State Senator - District 9</b>				
Farley, Steve	201600188	Democratic		0.00
				<b>0.00</b>
<b>State Representative - District 9</b>				
Friese, Randall	201600195	Democratic		0.00
Henderson, Ana	201600217	Republican	Participating	24,066.00
Powers Hannley, Pamela	201600269	Democratic	Participating	24,066.00
				<b>48,132.00</b>
<b>State Senator - District 10</b>				
Bradley, David	201600204	Democratic		0.00
Phelps, Randall	201600500	Republican		0.00
				<b>0.00</b>
<b>State Representative - District 10</b>				
Clodfelter, Todd	201600194	Republican	Participating	24,066.00
Engel, Kirsten	201600380	Democratic		0.00
Mach, Stefanie	201600118	Democratic		0.00
				<b>24,066.00</b>
<b>State Senator - District 11</b>				
Atchue, Ralph	201600412	Democratic		0.00
Smith, Steve	201600312	Republican		0.00
				<b>0.00</b>
<b>State Representative - District 11</b>				
Finchem, Mark	201600041	Republican		0.00
Hammond, Corin	201600161	Democratic	Participating	24,066.00
Leach, Venden "Vince"	201600123	Republican		0.00
				<b>24,066.00</b>

Enter Filer ID at (<http://apps.azsos.gov/apps/election/cfs/search/CandidateSearch.aspx>) to view a candidate's campaign finance reports

2/10/2017

# List of All Candidate Committees for the 2016 Election

Committees (Total / Participating) = 144 / 37

				General Initial Disbursement
<b>State Senator - District 12</b>				
Brown, Elizabeth	201600450	Democratic	Participating	24,066.00
Petersen, Warren	201600171	Republican		0.00
				<b>24,066.00</b>
<b>State Representative - District 12</b>				
Farnsworth, Eddie	201600357	Republican		0.00
Grantham, Travis	201600462	Republican		0.00
				<b>0.00</b>
<b>State Senator - District 13</b>				
Montenegro, Steve	201600033	Republican		0.00
				<b>0.00</b>
<b>State Representative - District 13</b>				
Graves, Isha	201600540	Democratic		0.00
Mitchell, Darin	201600196	Republican		0.00
Shooter, Don	201600328	Republican		0.00
				<b>0.00</b>
<b>State Senator - District 14</b>				
Alvarez, Jaime	201600471	Democratic	Participating	24,066.00
Griffin, Gail	201600030	Republican		0.00
				<b>24,066.00</b>
<b>State Representative - District 14</b>				
Holmes, Mike	201600315	Democratic	Participating	24,066.00
John, Drew	201600112	Republican		0.00
Lindstrom, Jason	201600588	Democratic	Participating	24,066.00
Nutt, Becky	201600310	Republican	Participating	16,044.00
				<b>64,176.00</b>

Enter Filer ID at (<http://apps.azsos.gov/apps/election/cfs/search/CandidateSearch.aspx>) to view a candidate's campaign finance reports

2/10/2017

# List of All Candidate Committees for the 2016 Election

Committees (Total / Participating) = 144 / 37

				General Initial Disbursement
<b>State Senator - District 15</b>				
Barto, Nancy	201600164	Republican		0.00
MacBeth, Tonya	201600455	Democratic	Participating	24,066.00
				<b>24,066.00</b>
<b>State Representative - District 15</b>				
Allen, John	201600091	Republican		0.00
Carter, Heather	201600191	Republican		0.00
Dwyer, Brandon	201600451	Democratic	Participating	24,066.00
				<b>24,066.00</b>
<b>State Senator - District 16</b>				
Farnsworth, David	201600175	Republican		0.00
Prior, Scott	201600116	Democratic	Participating	24,066.00
				<b>24,066.00</b>
<b>State Representative - District 16</b>				
Coleman, Doug	201600528	Republican		0.00
Prior, Cara	201600339	Democratic	Participating	24,066.00
Stinard, Sharon	201600287	Democratic	Participating	24,066.00
Townsend, Kelly	201600221	Republican		0.00
				<b>48,132.00</b>
<b>State Senator - District 17</b>				
Weichert, Steven	201600391	Democratic	Participating	24,066.00
Yarbrough, Steve	201600187	Republican		0.00
				<b>24,066.00</b>

Enter Filer ID at (<http://apps.azsos.gov/apps/election/cfs/search/CandidateSearch.aspx>) to view a candidate's campaign finance reports

2/10/2017

# List of All Candidate Committees for the 2016 Election

Committees (Total / Participating) = 144 / 37

				General Initial Disbursement
<b>State Representative - District 17</b>				
Mesnard, J.D.	201600193	Republican		0.00
Pawlik, Jennifer	201600390	Democratic	Participating	24,066.00
Weninger, Jeff	201600122	Republican		0.00
				<b>24,066.00</b>
<b>State Senator - District 18</b>				
Bowie, Sean	201600080	Democratic		0.00
Schmuck, Frank	201600560	Republican		0.00
				<b>0.00</b>
<b>State Representative - District 18</b>				
Epstein, Denise "Mitzi"	201600130	Democratic		0.00
Macias, Linda	201600531	Green		0.00
Norgaard, Jill	201600178	Republican		0.00
Robson, Bob	201600179	Republican		0.00
				<b>0.00</b>
<b>State Senator - District 19</b>				
Contreras, Guadalupe	201600203	Democratic		0.00
				<b>0.00</b>
<b>State Representative - District 19</b>				
Cardenas, Mark	201600201	Democratic		0.00
Espinoza, Jose	201600202	Democratic		0.00
				<b>0.00</b>
<b>State Senator - District 20</b>				
Herrera, Larry	201600392	Democratic	Participating	24,066.00
Quelland, Doug	201600321	Independent		0.00
Yee, Kimberly	201600165	Republican		0.00
				<b>24,066.00</b>

Enter Filer ID at (<http://apps.azsos.gov/apps/election/cfs/search/CandidateSearch.aspx>) to view a candidate's campaign finance reports

2/10/2017



# List of All Candidate Committees for the 2016 Election

Committees (Total / Participating) = 144 / 37

				General Initial Disbursement
<b>State Representative - District 20</b>				
Boyer, Paul	201600184	Republican		0.00
Gilfillan, Christopher	201600340	Democratic		0.00
Kern, Anthony	201600046	Republican		0.00
				<b>0.00</b>
<b>State Senator - District 21</b>				
Lesko, Debbie	201600151	Republican		0.00
				<b>0.00</b>
<b>State Representative - District 21</b>				
Payne, Kevin	201600259	Republican		0.00
Rasmussen-Lacotta, Deanna	201600541	Democratic	Participating	24,066.00
Rivero, Jose	201600236	Republican		0.00
				<b>24,066.00</b>
<b>State Senator - District 22</b>				
Burges, Judy	201600189	Republican		0.00
Muscato, Michael	201600467	Democratic	Participating	24,066.00
				<b>24,066.00</b>
<b>State Representative - District 22</b>				
Hernandez, Manuel	201600506	Democratic	Participating	24,066.00
Livingston, David	201600197	Republican		0.00
Lovas, Phil	201600181	Republican		0.00
				<b>24,066.00</b>
<b>State Senator - District 23</b>				
Kavanagh, John	201600172	Republican		0.00
				<b>0.00</b>

Enter Filer ID at (<http://apps.azsos.gov/apps/election/cfs/search/CandidateSearch.aspx>) to view a candidate's campaign finance reports

2/10/2017

# List of All Candidate Committees for the 2016 Election

Committees (Total / Participating) = 144 / 37

				General Initial Disbursement
<b>State Representative - District 23</b>				
Caputi, Tammy	201600343	Democratic	Participating	24,066.00
Lawrence, Jay	201600096	Republican		0.00
Ugenti-Rita, Michelle	201600355	Republican		0.00
				<b>24,066.00</b>
<b>State Senator - District 24</b>				
Hobbs, Katie	201600199	Democratic		0.00
				<b>0.00</b>
<b>State Representative - District 24</b>				
Alston, Lela	201600192	Democratic		0.00
Clark, Ken	201600316	Democratic		0.00
				<b>0.00</b>
<b>State Senator - District 25</b>				
Worsley, Robert	201600422	Republican		0.00
				<b>0.00</b>
<b>State Representative - District 25</b>				
Bowers, Russell W "Rusty"	201600174	Republican		0.00
Rahn, Kathleen	201600465	Democratic	Participating	24,066.00
Udall, Michelle	201600496	Republican		0.00
				<b>24,066.00</b>
<b>State Senator - District 26</b>				
Mendez, Juan	201600354	Democratic	Participating	1,545.00
				<b>1,545.00</b>

Enter Filer ID at (<http://apps.azsos.gov/apps/election/cfs/search/CandidateSearch.aspx>) to view a candidate's campaign finance reports

2/10/2017

# List of All Candidate Committees for the 2016 Election

Committees (Total / Participating) = 144 / 37

				General Initial Disbursement
<b>State Representative - District 26</b>				
Adkins, Steven	201600456	Republican		0.00
Blanc, Isela	201600397	Democratic	Participating	24,066.00
Salman, Athena	201600385	Democratic	Participating	24,066.00
Trujillo, Cara Nicole	201600466	Green		0.00
				<b>48,132.00</b>
<b>State Senator - District 27</b>				
Miranda, Catherine	201600035	Democratic		0.00
Torres, Angel	201600632	Green		0.00
				<b>0.00</b>
<b>State Representative - District 27</b>				
Bolding, Reginald	201600101	Democratic		0.00
Rios, Rebecca	201600113	Democratic		0.00
				<b>0.00</b>
<b>State Senator - District 28</b>				
Brophy Mcgee, Kate	201600177	Republican		0.00
Meyer, Eric	201600166	Democratic		0.00
				<b>0.00</b>
<b>State Representative - District 28</b>				
Butler, Kelli	201600317	Democratic		0.00
Hamway, Mary	201600302	Republican		0.00
Syms, Maria	201600525	Republican		0.00
				<b>0.00</b>
<b>State Senator - District 29</b>				
Nuttle, Crystal	201600572	Republican		0.00
Quezada, Martin	201600150	Democratic		0.00
				<b>0.00</b>

Enter Filer ID at (<http://apps.azsos.gov/apps/election/cfs/search/CandidateSearch.aspx>) to view a candidate's campaign finance reports

2/10/2017

# List of All Candidate Committees for the 2016 Election

Committees (Total / Participating) = 144 / 37

				General Initial Disbursement
<b>State Representative - District 29</b>				
Andrade, Richard	201600144	Democratic		0.00
Chavez, Cesar	201600552	Democratic		0.00
Wilson, John	201600577	Republican	Participating	24,066.00
				<b>24,066.00</b>
<b>State Senator - District 30</b>				
Lyon, John	201600394	Republican		0.00
Meza, Robert	201600029	Democratic		0.00
				<b>0.00</b>
<b>State Representative - District 30</b>				
Cox, Gary	201600281	Republican		0.00
Martinez, Ray	201600473	Democratic		0.00
Navarrete, Otoniel	201600444	Democratic		0.00
				<b>0.00</b>
<b>Grand Total</b>				<b>1,111,879.00</b>

Enter Filer ID at (<http://apps.azsos.gov/apps/election/cfs/search/CandidateSearch.aspx>) to view a candidate's campaign finance reports

2/10/2017

# Rulemaking & Legislation

## Commission Rulemaking Authority

In accordance with A.R.S. §16-956(C), the Commission may adopt rules to carry out the purposes of the Citizens Clean Elections Act.

The Commission proposes and adopts rules in public meetings, with at least sixty days allowed for interested parties to comment after the rules are proposed. After consideration of the comments received in the sixty day comment period, the Commission may adopt the rule in an open meeting.

The Commission diligently makes changes to its rules and procedures to address concerns and improve the functions of the program. Rules adopted by the Commission are not effective until January 1 in the year following the adoption of the rule. However, rules adopted by unanimous vote may be immediately effective and are enforceable.

In 2016, the Commission made amendments to, or renumbered, the following rules:

- A.A.C. R2-20-101 • A.A.C. R2-20-114
- A.A.C. R2-20-104 • A.A.C. R2-20-115
- A.A.C. R2-20-105 • A.A.C. R2-20-402.01
- A.A.C. R2-20-107 • A.A.C. R2-20-402.02
- A.A.C. R2-20-109 • A.A.C. R2-20-702
- A.A.C. R2-20-110 • A.A.C. R2-20-703
- A.A.C. R2-20-111
- A.A.C. R2-20-112

## Vision Statement

Through the successful implementation of the Arizona Citizens Clean Elections Act, the Commission seeks to improve the integrity of Arizona state government and promote public confidence in the Arizona political process.

## 5 Year Review Report

In June 2016, the Commission submitted a revised 5 year rulemaking review report to the Governor's Regulatory Review Council (GRRRC). (A.R.S. §41-1056)

# 2016 Legislation



The Commission adopted the following legislative principles and priorities in an effort to improve the Act and Commission procedures:

**Oppose efforts to defund or eliminate the Citizens Clean Elections Act and/or the Commission.** Over several sessions, members of the legislature have proposed measures that seek to defund, limit, or eliminate the authority of the Act or the Commission itself. The Commission has historically opposed these efforts on the grounds that they are typically poorly constructed, misleading, or otherwise ill-considered. The Commission works to maintain the letter and spirit of the law and supports efforts that further the purpose of the Act.

**Support election law reforms.** Elections issues continue to percolate through both the political and legal process. The Commission continues to support reforms including improving the public financing program; improving the campaign finance code to ensure that voters are receiving information about the identity and contributions of campaign contributors and expenditures, including independent expenditures; ensuring that changes improve the State's anti-corruption, anti-circumvention and informational interests, the Clean Elections Act and the Commission's independence; and improving voter access to information, voter involvement and voting.

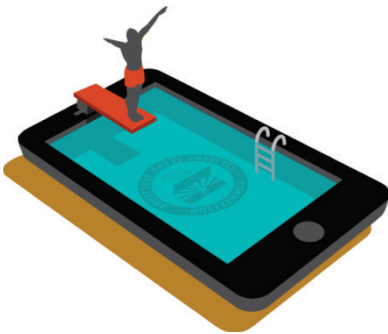
**Support improvements to voter education and access.** The Commission has supported efforts to enhance voter education and participation through legislation that advance the anti-corruption and public participation values that undergird the Act. The Commission continues to express its support for legislation that advances these aims.

# Looking Forward to 2017

Here is a preview of what the Commission is looking forward to in 2017:

## Roundtable Event

The Commission will host a Roundtable event for Arizona election officials, community organizations and other stakeholders. The event will take place on July 13, 2017. The goal is to gather valuable feedback to help craft future educational messages. The discussion will focus on various topics such as:



- Data driven decision making;
- Technology;
- Review of 2016;
- Voter trends;
- Educational opportunities for 2018

## 2017 Education Plan

The Commission will continue its voter education efforts in 2017 by offering voters a comprehensive education plan that focuses on how to participate in the electoral process, voting informed and the importance of voting in local elections. The Commission will offer voters the following education tools in 2017:

- Smart Device Application
- Candidate Compass
- Find my Polling Place
- Find My Elected Officials Tool
- Enhanced Website
- Education Campaign

## 2018 Election Cycle ~ Candidate Information

Candidates can begin collecting \$5 qualifying contributions on August 1, 2017, the start of the qualifying period. Candidates must collect a minimum number of qualifying contributions, as referenced below;

Governor	Secretary of State	Attorney General	Treasurer	Supt. Of Public Inst.	Corporation Commission	Mine Inspector	Legislature
4,000	2,500	2,500	1,500	1,500	1,500	500	200

# Commissioners & Staff

## Commission Structure & Mission

The Citizens Clean Elections Commission was established by the enactment of the Citizens Clean Elections Act, A.R.S., Title 16, Chapter 6, Article 2. In addition to administering the provisions of Article 2, the Commission promulgates rules and enforces A.R.S. §§ 16-940 through 16-961.

The Commission's mission is to fairly, faithfully and fully implement and administer the Citizens Clean Elections Act.

The Citizens Clean Elections Commission consists of five members. All members must be registered to vote in the State of Arizona. No more than two members of the commission may be members of the same political party. No more than two members of the commission may be residents of the same county.

\*Commissioners listed are for the 2016 calendar year.

## Commissioners\*

Chairman Mitchell C. Laird (R)  
Maricopa County, AZ  
*Appointed 2012*

Steve M. Titla (D)  
Gila County, AZ  
*Appointed 2013*

Damien R. Meyer (D)  
Maricopa County, AZ  
*Appointed 2015*

Mark Kimble (I)  
Pima County, AZ  
*Appointed 2015*

Galen D. Paton (R)  
Pima County, AZ  
*Appointed 2016*

## Commission Staff

Thomas M. Collins, Executive Director  
Sara A. Larsen, Fin. Affairs & Comp. Officer  
Gina Roberts, Voter Education Manager  
Mike Becker, Policy Director  
Paula Thomas, Executive Officer  
Alec Shaffer, Web Content Manager  
Amy Jicha, Voter Education and Legal Intern



# Commissioner Biographies

## **Mitchell C. Laird- Republican - Maricopa County**

Former Governor Jan Brewer appointed Mitchell C. Laird in 2012 to succeed former Commissioner Jeffrey L. Fairman whose term expired. Mitch graduated from Grand Canyon University (GCU) in 1972 and received his Juris Doctor degree in 1976 from the Arizona State University College of Law. In 2004 he received an Honorary Doctor of Laws degree from his alma mater GCU.

In 1976 Mitch was admitted to the State Bar of Arizona and founded his own law firm now known as Laird & Associates, P.C. Mitch has served as President of the GCU Alumni Association and for 13 years taught business law at GCU. Mitch served for many years as general counsel to GCU and has also served as general counsel to the Arizona Republican Party. He currently serves as the Chief Executive Officer of a non-profit organization known as Canyon Institute that supports education and other charitable endeavors.

Mr. Laird was a Burger King franchisee from 1994 until 2015 and owned 31 Burger King restaurants throughout Arizona. Mitch currently serves as Chairman Emeritus of the Board of the National Franchise Association and has served as President of the Southwest Franchise Association.

In 2007, Mitch was appointed to serve on the Arizona Ad Hoc Committee for Workplace Enforcement to provide the Arizona legislature with input from the business community on the Legal Arizona Workers Act's impact on Arizona business owners. In May 2008, at the request of the United States Congress, Mitch testified on Capitol Hill regarding Arizona's new immigration law and federal immigration reform before the House Ways and Means Committee of the United States Congress.

Mr. Laird and Becki, his wife of 42 years, have three sons, four grandsons and one granddaughter. All three of his sons have served our Country in the U.S. Military and two of them each served two tours in Iraq.

## **Steve M. Titla - Democrat - Gila County**

Former Senate Democratic Leader Leah Landrum Taylor appointed Steve M. Titla in July 2013 to the Citizens Clean Elections Commission. Mr. Titla is a partner in the Titla & Parsi law firm and is admitted to practice law both in Arizona and on the San Carlos Apache Reservation. The firm represents the San Carlos Apache Tribe as special counsel and has also served as legal counsel for the election boards of the San Carlos Apache and San Juan Southern Paiute Tribes. Previously, Mr. Titla was an attorney with the Navajo Nation Department of Justice and has served as president of the National Native American Bar Association.

# Commissioner Biographies

In addition to a B.S. and J.D. from Arizona State University, Mr. Titla earned an M.B.A. from the University of Phoenix. From 1974-76 Mr. Titla served in the U.S. Marine Corps, leaving with an honorable discharge. He also served in the Arizona National Guard until his honorable discharge in 1980. Mr. Titla's term on the Citizens Clean Elections Commission expires in January of 2018.

### **Damien R. Meyer – Democrat – Maricopa County**

Former Governor Jan Brewer appointed Damien R. Meyer to the Citizens Clean Elections Commission to serve a term ending January 31, 2019. Damien R. Meyer is an experienced commercial litigation attorney. Damien has extensive experience in representing both individuals and businesses including banks, contractors, landlords, real estate developers, aviation companies, entrepreneurs, and health care companies in all areas of their business including contractual analysis and disputes, collection and payment disputes, commercial tort liability, provisional remedies and negotiation of pre-litigation disputes to avoid formal litigation. He also has extensive experience in representing clients in formal litigation in Arizona State and Federal courts, the Arizona Court of Appeals, in private arbitrations and before several state administrative agencies. Mr. Meyer, his wife and two children currently reside in Phoenix.

### **Mark Kimble – Independent – Pima County**

Senate Democratic Leader Katie Hobbs appointed Mark Kimble, an Independent, to the Citizens Clean Elections Commission in July 2015. Mark was a longtime journalist in Southern Arizona. After graduating from the University of Arizona with a bachelor's degree in journalism, Mark worked for the Associated Press and then for the Tucson Citizen newspaper. During a 35-year career at the Citizen, he was a reporter, city editor, assistant managing editor and associate editor-columnist in charge of the editorial page. When the Citizen closed in 2009, Mark went to work as senior press advisor and later as communications director for Congresswoman Gabrielle Giffords. When she resigned in 2012, Mark became communications director for her successor, Congressman Ron Barber. Mark and his wife, Jennifer Boice, live in Tucson.

# Commissioner Biographies

## **Galen D. Paton – Republican – Pima County**

Governor Doug Ducey appointed Galen D. Paton, a Republican, to the Citizens Clean Elections Commission for a 5-year term expiring January 31, 2021. Commissioner Paton obtained his Master of Arts in Physical Education from the Southern Methodist University in Dallas, Texas. He has had a long and rewarding career coaching high school and college softball, volleyball and basketball teams in the southwest. In 2005, he led Sabino High School to the Arizona 4A State Championship and a No. 4 ranking in the country. The Arizona Coaches Association along with the National Fastpitch Coaches Association crowned Mr. Paton 2005 coach of the year. Mr. Paton retired from coaching in 2010 and is a current member of the Realty Executives Tucson Elite group. He resides in Tucson with his wife.



Citizens Clean Elections Commission  
1616 W. Adams St., Suite 110  
Phoenix, Arizona 85007  
Telephone: 602-364-3477  
Toll Free: 1-877-631-8891  
Fax: 602-364-3487  
E-mail: [ccec@azcleanelections.gov](mailto:ccec@azcleanelections.gov)  
[azcleanelections.gov](http://azcleanelections.gov)